

BALDOR • RELIANCE

Customer information packet

L1510T

7.5HP, 1750RPM, 1PH, 60HZ, 215T, 3738LC, OPEN

Class - None

Division - Not Applicable

Specifications

Enclosure	OPEN
Frame	215T
Frame Material	Steel
Frequency	60.00 Hz
Haz Area Class and Group	None
Haz Area Division	Not Applicable
Motor Letter Type	Cap Start, Cap Run
Output @ Frequency	7.500 HP @ 60 HZ
Phase	1
Synchronous Speed @ Frequency	1800 RPM @ 60 HZ
Voltage @ Frequency	230.0 V @ 60 HZ
Agency Approvals	C UR US
Ambient Temperature	40 °C
Auxiliary Box	NO AUXILLARY BOX
Auxiliary Box Lead Termination	None
Base Indicator	Rigid
Bearing Grease Type	Polyrex EM (-20F +300F)
Blower	None
Current @ Voltage	31.000 A @ 230.0 V
Design Code	L
Drip Cover	No Drip Cover
Duty Rating	CONT
Efficiency @ 100% Load	85.5 %
Electrically Isolated Bearing	Not Electrically Isolated
Feedback Device	NO FEEDBACK
Front Shaft Indicator	None
Heater Indicator	No Heater
High Voltage Full Load Amps	31.0 a
Insulation Class	F
Inverter Code	Not Inverter
KVA Code	G
Lifting Lugs	Standard Lifting Lugs

Part detail

Revision	G
Type	AC
Mech. spec.	37M295
Base	
Status	PRD/A
Elec. spec.	37WGL965
Layout	37LYM295
Eff. date	02-16-2026
CD Diagram	CD0017A02
Poles	04
Leads	2#10 A PH,2#14 B PH
Proprietary	False
Created date	06-26-2023

Locked Bearing Indicator	No Locked Bearing
Motor Lead Quantity/Wire Size	2 @ 10 AWG, A PH
Motor Lead Termination	Flying Leads
Motor Standards	NEMA
Motor Type	3738LC
Mounting Arrangement	F1
Number of Poles	4
Overall Length	17.45 IN
Power Factor	93
Product Family	General Purpose
Pulley End Bearing Type	Ball
Pulley Face Code	Standard
Pulley Shaft Indicator	Standard
Rodent Screen	None
Service Factor	1.15
Shaft Diameter	1.375 IN
Shaft Ground Indicator	No Shaft Grounding
Shaft Rotation	Reversible
Shaft Slinger Indicator	No Slinger
Speed	1750 rpm
Speed Code	Single Speed
Starting Method	Direct on line
Thermal Device - Bearing	None
Thermal Device - Winding	None
Vibration Sensor Indicator	No Vibration Sensor
Winding Thermal 1	None
Winding Thermal 2	None

Nameplate

NP1256L									
CAT.NO.	L1510T								
SPEC.	37M295L965G1								
HP	7.5								
VOLTS	230								
AMP	31								
RPM	1750								
FRAME	215T		HZ	60		PH	1		
SER.F.	1.15	CODE	G	DES	L	CLASS	F		
NEMA-NOM-EFF	85.5	PF	93						
RATING	40C AMB-CONT								
CC									
DE	6307		ODE	6206					
ENCL	OPEN	SN							

Accessories

Part number	Description	Multiplier
37-1404	C FACE KIT	A8

AC Induction Motor Performance Data

Record # 101357

Typical performance - not guaranteed values

Winding: 37WGL965-R001		Type: 3740LC		Enclosure: OPEN	
Nameplate Data			230 V, 60 Hz: Single Voltage Motor		
Rated Output (HP)	7.5	Full Load Torque	22.56 LB-FT		
Volts	230	Start Configuration	direct on line		
Full Load Amps	31	Breakdown Torque	55.9 LB-FT		
R.P.M.	1750	Pull-up Torque	37.2 LB-FT		
Hz	60 Phase	1	Locked-rotor Torque	57 LB-FT	
NEMA Design Code	L	KVA Code	G	Starting Current	187 A
Service Factor (S.F.)	1.15	No-load Current	8.48 A		
NEMA Nom. Eff.	85.5	Power Factor	93	Line-line Res. @ 25°C	0.24696 Ω A Ph 0.95376 Ω B Ph
Rating - Duty	40C	AMB-CONT	Temp. Rise @ Rated Load	66°C	
S.F. Amps			Temp. Rise @ S.F. Load	86°C	
			Locked-rotor Power Factor	87.2	

Load Characteristics 230 V, 60 Hz, 7.5 HP

% of Rated Load	25	50	75	100	125	150	S.F.
Power Factor	73	86	91	93	93	92	93
Efficiency	75.5	84.5	86.4	85.6	83	79.2	84
Speed	1787.7	1776	1762.5	1746.4	1727.2	1704.5	1735
Line amperes	11.1	16.7	23.1	30.7	39.4	49.7	35.9

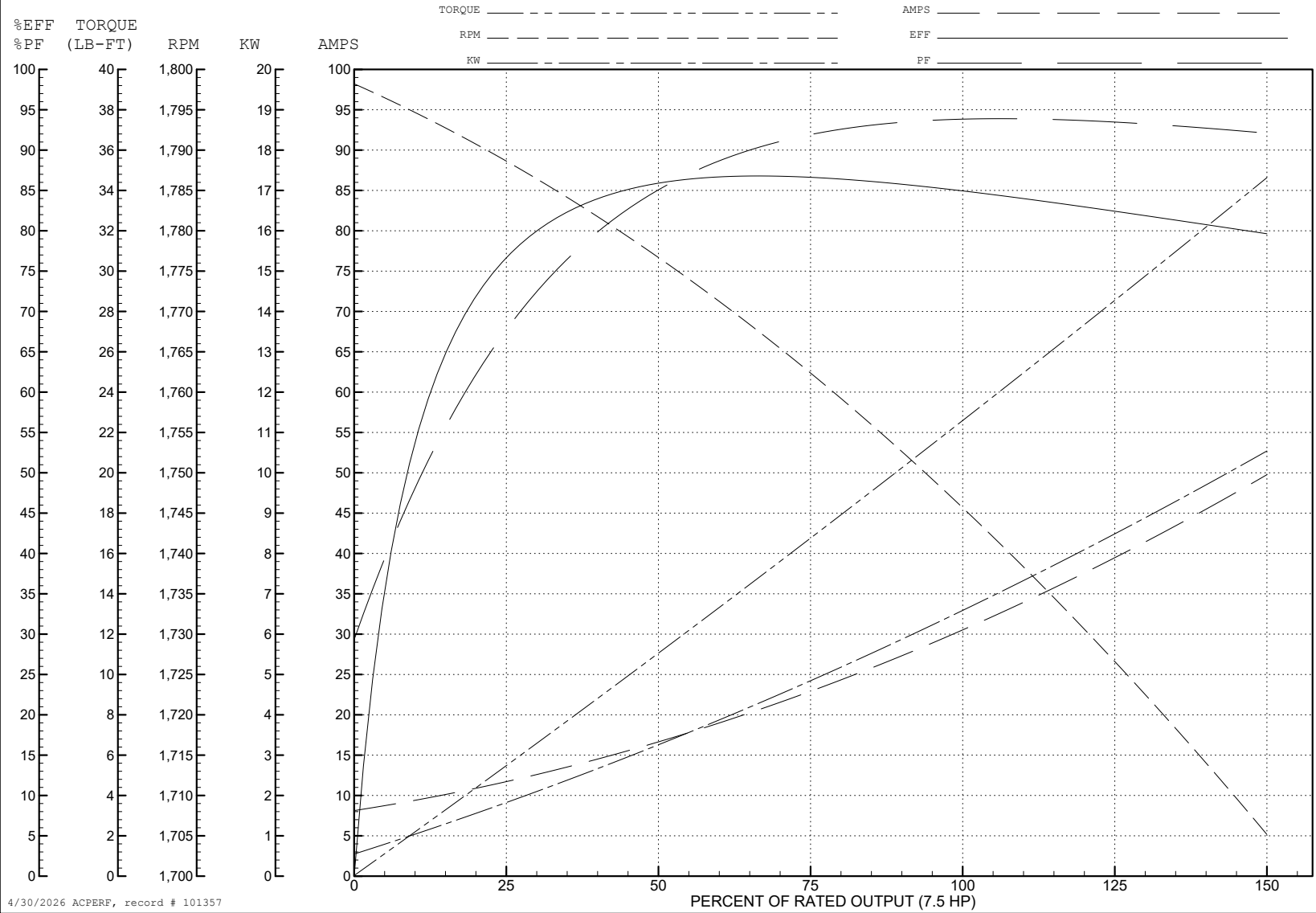
ABB Motors and Mechanical Inc.

WINDING # 37WGL965

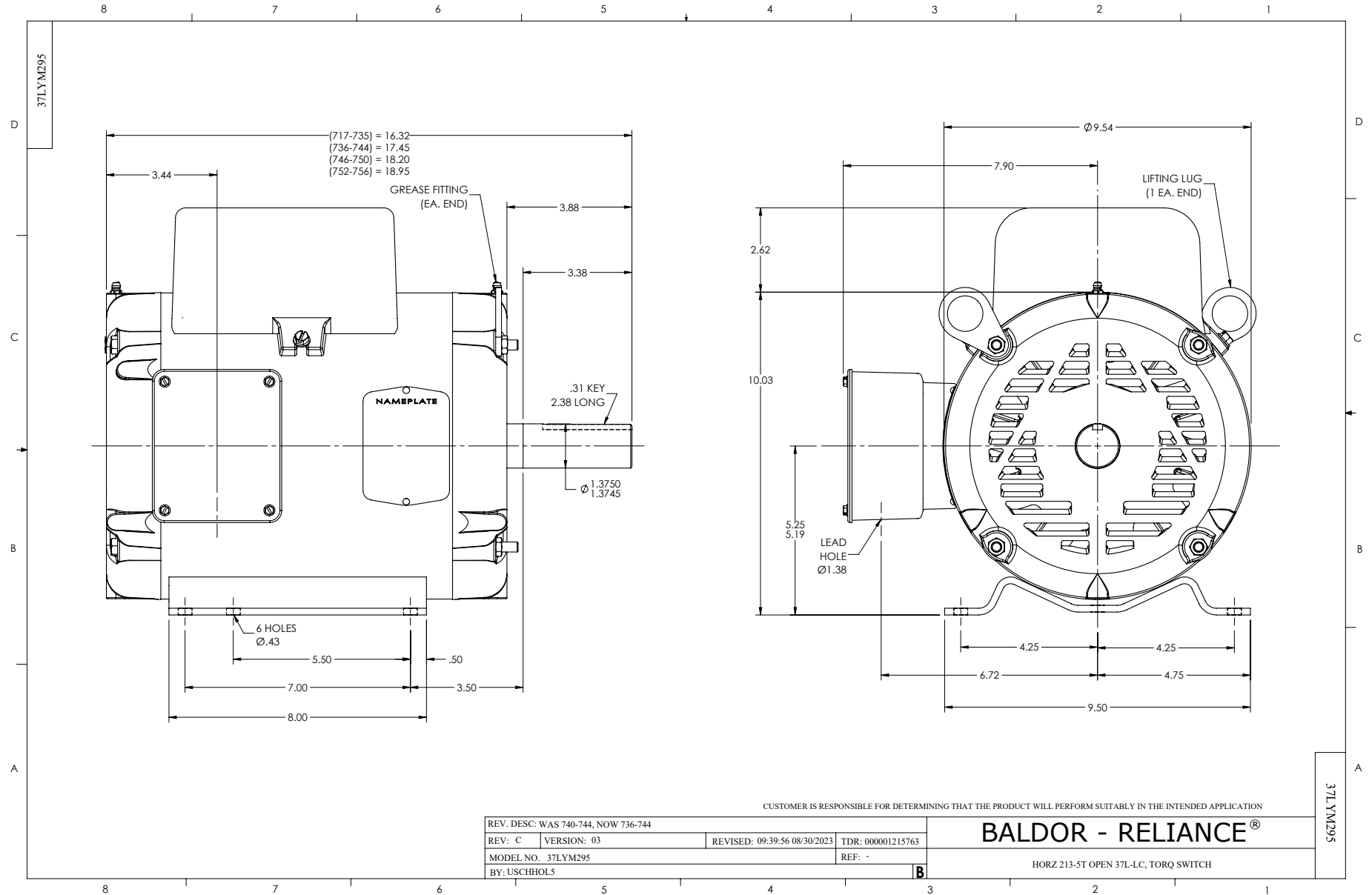
Typical performance - not guaranteed values.

7.5 HP 1 PH 60 HZ 1750 RPM 230 V 3740LC

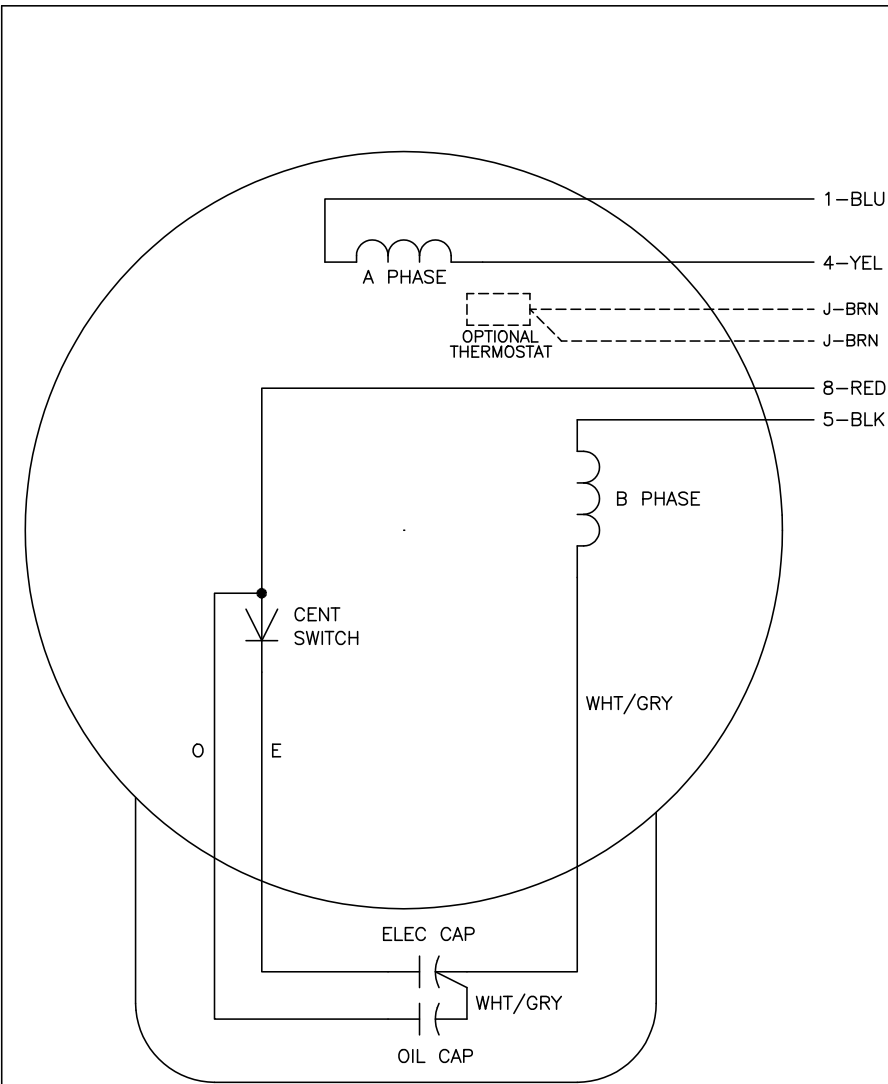
TORQUES (LB-FT): PO=55.9 PU=37.2 LR=57 LRA=187



4/30/2026 ACPERF, record # 101357



CD0017A02



	LINE A	LINE B
STD	1,8	4,5
OPP	1,5	4,8

NOTES:

1. STANDARD ROTATION IS CCW FACING END OPPOSITE SHAFT EXTENSION.
2. OPTIONAL THERMOSTAT IS PROVIDED WHEN SPECIFIED.
3. MULTIPLE CAPACITORS ARE CONNECTED IN PARALLEL UNLESS OTHERWISE SPECIFIED.
4. LEAD COLORS ARE OPTIONAL. LEADS MUST ALWAYS BE NUMBERED AS SHOWN.

CD0017A02

REV. DESC: REVISE TO SHOW OPTIONAL COLORS			
REV. LTR: B	BY: JLP	REVISED: 04/09/99 11:30	TDR: 0178636
CD0017A02		FILE: AAA00007514	MDL: -
		MTL: -	

BALDOR ELECTRIC Co.

TYPE LC, SV, REV, 4 LEADS