

## General Safety Rules

- Before using the tool, read through these instructions carefully.
  - Also read the Red Safety Instructions thoroughly.
  - For your safety, the tool must not be modified.
    - Use approved personal safety equipment.
    - Use Atlas Copco Genuine Parts only.
- Always replace worn or damaged warning stickers.

## Notes:

- 1: Nylon locking rings(2) must be replaced each time the handle is removed.
- 2: Add 5ml of oil into the air inlet, twice per shift. See table for recommended lubricants.

## Safety Warnings—Symbols in these Instructions

Pay special attention to sections in these documents dealing with safety.  
If you see either of these symbols:



**WARNING!** A danger, or hazardous procedure which CAN lead to serious injury, or worse.



**CAUTION** A risk, or risky procedure which CAN lead to injury, or damage to the tool.

## Before Starting

*Make sure you have:*

- the correct hose size and length.
- checked for damage to air line and couplings.
- all air connectons correctly tightened.
- the correct operating pressure (max 100 psi). Higher pressure can be dangerous and damage the tool.
- blown the air line clean.
- oiled the hammer.
- a steel with the correct shank size.
- checked that the steel is securely latched. Repair any tool with poor retention.
- use proper safety gear: boots, helmet, gloves and ear protection are the minimum.

## Recommended lubricants

Lubricant	Temperature range °C	Viscosity grade
Synthetic AIR-OIL	-30 to +50	ISO VG 46-100
Mineral Oil	-20 to +15	ISO VG 32-46
Mineral Oil	+15 to +35	ISO VG 46-100

# Atlas Copco

# TEX 317D



## Specifications -TEX 317D

<b>Net Weight</b>	7 kg	15 lbs
<b>Length</b>	387 mm	15.25 in
<b>Bore</b>	29 mm	1.125 in
<b>Stroke</b>	102 mm	3 in
<b>Blows per minute</b>	2200	2200
<b>Chuck Sizes</b>	14.8 mm Hex	.580 in Hex
	17.5 mm Rnd	.680 in Rnd
<b>Air Inlet (NPT)</b>	10 mm	3/8 in
<b>Air Consumption*</b>	1.1 m <sup>3</sup> /m	36 cfm

## Maintenance

*For best results and security:*

- always check that hammer is disconnected from the air hose before removing steel
- clean and inspect hammer every 3 months.
- always keep the hammer well lubricated during work and storage.
- flush the hammer with paraffine-based lubricant before long-term storage. Follow with a normal lubrication and a short period of operation. Always store in a dry place.

## Operation

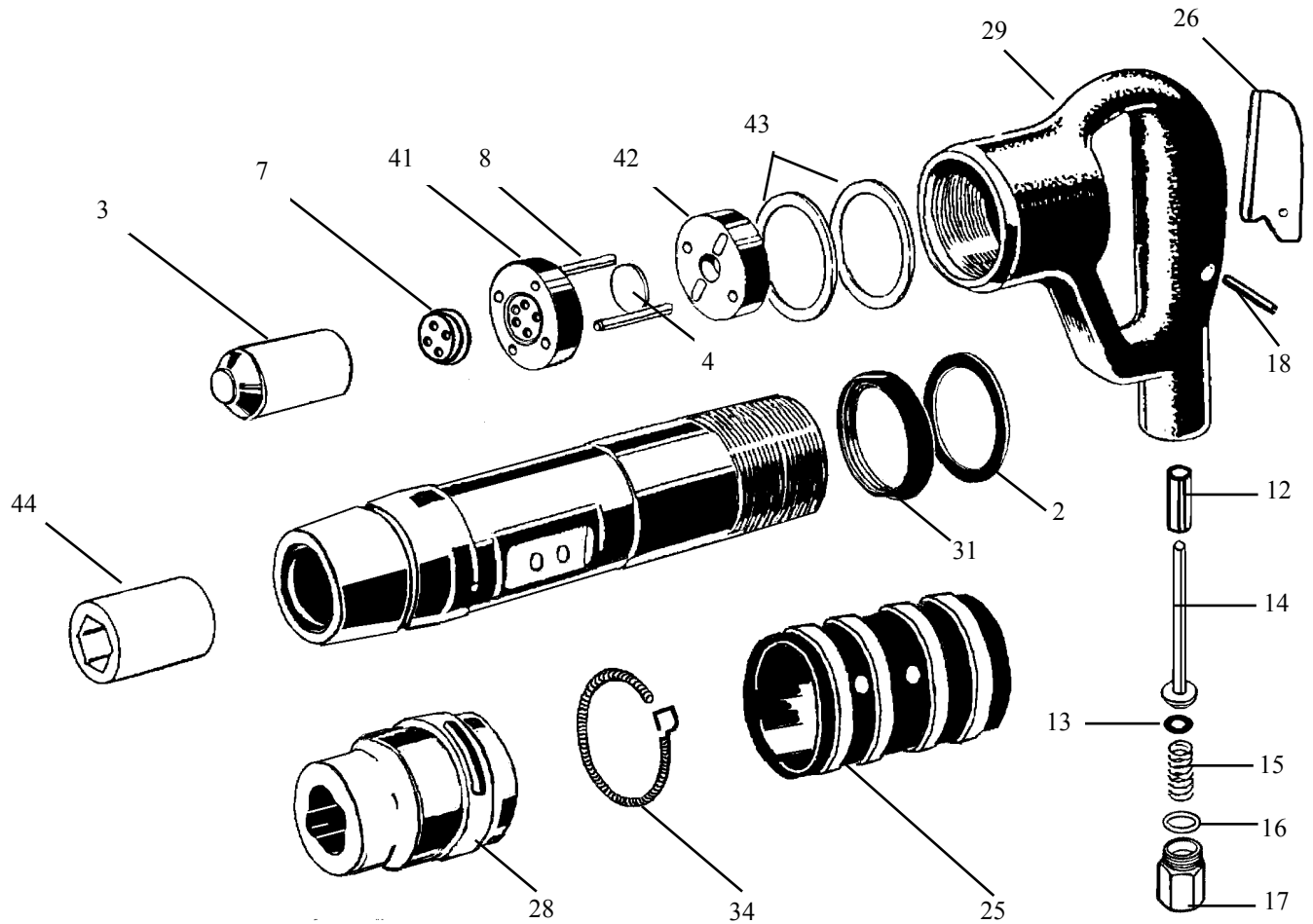
*Make sure you have:*

- steels sharpened correctly for the job.
- correct posture, feet spread and away from the working end of the tool.
- both hands clear of the steel, especially when using the tool in an elevated position.
- the steel in contact with the work surface before pressing the trigger.
- blank-firing will cause premature retainer wear.
- follow local laws and safety procedures.

## Optional Equipment

*The following optional equipment is available from Atlas Copco:*

- MANTEX lightweight airhose
- VAM water separators
- Steel Accessories



INDEX	PART	DESCRIPTION	INDEX	PART	DESCRIPTION
1	9245-9969-00	BARREL	25	9245-9964-40	EXHAUST DEFLECTOR
2	9245-9963-10	LOCK RING BUMPER	26	9245-9982-96	TRIGGER
3	9245-9963-30	PISTON	29	9245-9983-04	HANDLE BARE
4	9245-9963-50	VALVE PLATE	NS	9245-9983-03	HANDLE COMPLETE
5	9245-9963-60	BUMPER VALVE SEAT	34	9245-9964-90	RETAINER SPRING
8	9245-9963-70	VALVE DOWEL (2)	NS	9245-9965-10	SWIVEL(7/8 - 24, 1/2" HOSE BARB)
12	9245-9982-97	THROTTLE VALVE BUSHING	41	9245-9965-50	FRONT VALVE SPACER HOUSING
13	9245-9982-99	THROTTLE VALVE O-RING	42	9245-9965-60	UPPER VALVE PLATE
14	9245-9982-98	THROTTLE VALVE	43	9245-9965-70	INTER-LOCK RING (2)
15	9245-9983-01	THROTTLE VALVE SPRING	44	9245-9965-80	BUSHING FOR ROUND SHANK (.680")
16	9245-9983-02	AIR INLET O-RING	44	9245-9965-90	BUSHING FOR HEX SHANK (.580")
17	9245-9983-00	AIR INLET BUSHING	28	9247-9853-50	OVAL COLLAR RETAINER
18B	9245-9964-20	LEVER FULCRUM PIN	31	9245-9971-00	HANDLE LOCK RING

**SERVICE NOTE:** When re-assembling this tool following any cleaning or service procedure, the two piece INTER LOCK RINGS (PN: 6143) must be replaced inside handle or handle will not lock in the tightened position and may vibrate loose when operating the tool (a small amount of thread locking compound may also be applied to barrel threads before the handle LOCK RING PN: 6131 is tightened in place.)