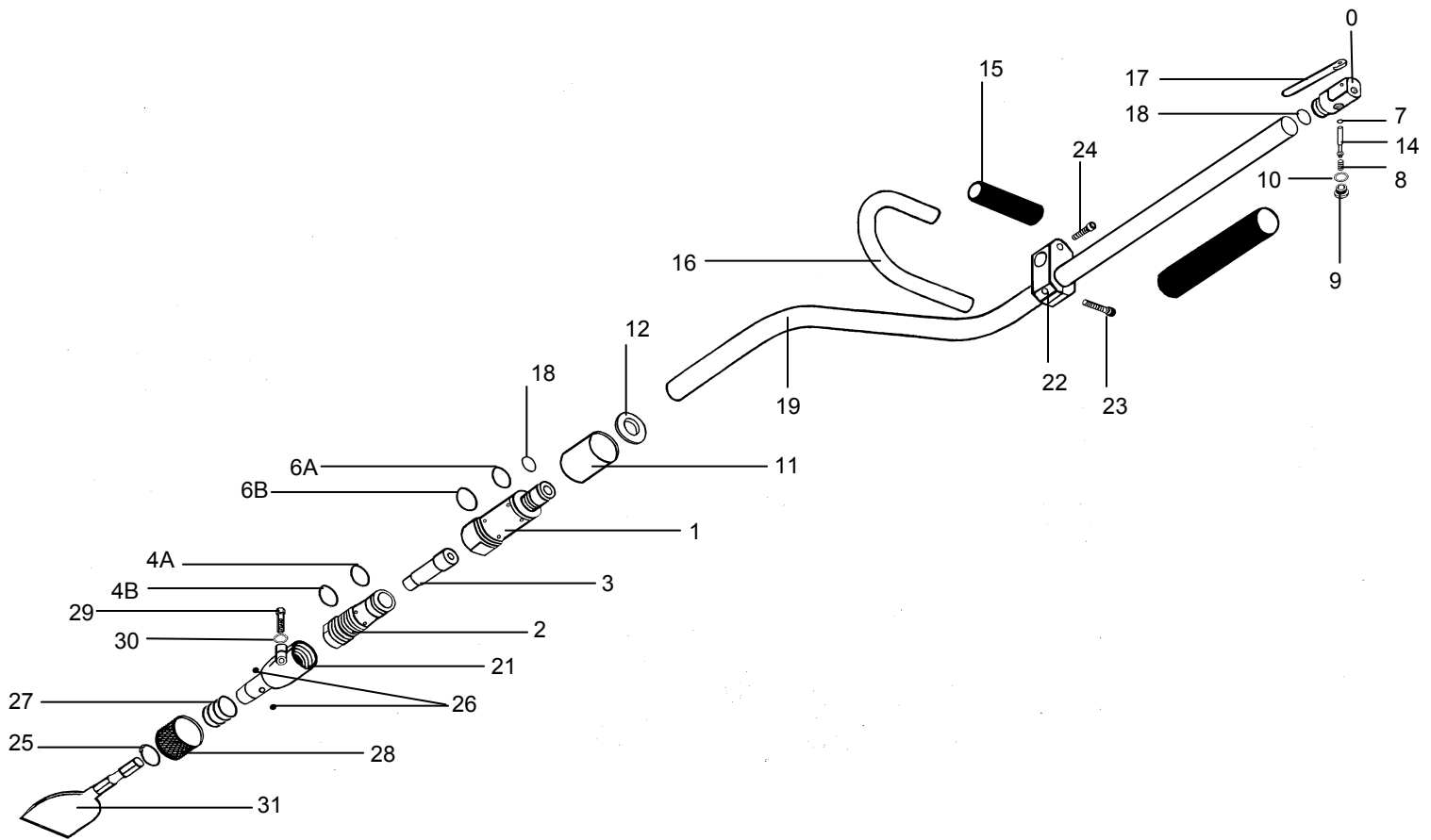


TEX 117 FLOOR SCRAPER

17b. CLASS



INDEX	PART	DESCRIPTION	INDEX	PART	DESCRIPTION
0	9245-9987-34	THROTTLE BODY	17	9245-9987-54	THROTTLE LEVER
NS	9245-9987-35	THROTTLE BODY COMP.	18	9245-9987-55	CONNECTION O-RING (2)
1	9245-9987-36	CYLINDER	19	9245-9987-56	CONNECTING PIPE
2	9245-9987-37	CYLINDER SLEEVE	21	9245-9987-57	FRONT HEAD
3	9245-9987-38	PISTON	22	9245-9987-58	CONNECTING BLOCK
4A	9245-9987-39	SLEEVE O-RING	23	9245-9987-59	CLAMP SCREW
4B	9245-9987-40	SLEEVE O-RING	24	9245-9987-60	HANDLE BAR SCREW
5	9245-9987-41	SPLIT PIN	25	9245-9987-61	RETAINING RING
6A	9245-9987-42	CYLINDER O-RING	26	9245-9987-62	RETAINER BALL (2)
6B	9245-9987-43	CYLINDER O-RING	27	9245-9987-63	RETAINER SPRING
7	9245-9987-44	THROTTLE VALVE O-RING	28	9245-9987-64	RETAINER
8	9245-9987-45	THROTTLE VALVE SPRING	29	9245-9987-65	FRONT HEAD BOLT
9	9245-9987-46	THROTTLE PLUG	30	9245-9987-66	FRONT HEAD BOLT WASHER
10	9245-9987-47	THROTTLE PLUG O-RING	31	9245-9987-64	4" CHISEL
11	9245-9987-48	EXHAUST SLEEVE	NS	9245-9989-15	4" YOKE
12	9245-9987-49	EXHAUST SLEEVE CAP	NS	9245-9989-12	4" BLADE
13	9245-9987-50	RUBBER GRIP	NS	9245-9989-13	8" BLADE
14	9245-9987-51	THROTTLE VALVE	NS	9245-9989-14	12" BLADE
15	9245-9987-52	HANDLE BAR GRIP			
16	9245-9987-53	HANDLE BAR			

FLOOR SCRAPER

17 lb. class

TEX 117



SPECIFICATIONS		TEX 117	
Net Weight	8 kg	17 lbs.	
Bore	30 mm	1.1875 in	
Stroke	39 mm	1.501 in	
Blows per minute	2500		
Chuck Sizes #	15 mm Hex	.590 in Hex	
Air Inlet (NPT)	6 mm	1/4 in	
Air Consumption*	.25 m3/m	9 cfm	

WARNING:

ALWAYS DISCONNECT THE AIR SUPPLY BEFORE CHANGING CHISELS OR DISMANTLING THE TOOL FOR SERVICE OR REPAIR. FOR MAXIMUM SAFETY WE ADVISE THE INSTALLATION OF A SHUT-OFF VALVE AT THE END OF THE AIR LINE.

#Tool is equipped with a 10 cm / 4 inch wide blade with a 15 mm / .590 inch hex - ball retainer shank .