



*Atlas Copco*



## The ready to go range

X-AIR 185-100: 189 CFM - 100  
PSI With smart controller

# Easy to use and quick to service

Efficiency can mean many things, such as 110% spillage free frame, an intuitive controller, easy to maneuver and quick to service. The new X-AIR 185-100 is a total package, designed and produced in the US.

LEGENDARY  
HARDHAT®  
CANOPY

EASY TO USE  
CONTROLLER

EXTERNAL  
LIFTING EYE

QUICK  
SERVICE

110%  
SPILLAGE FREE

MINIMUM PRESSURE VALVE  
TO PROTECT YOUR  
INVESTMENT

EASY  
ACCESS

T4F

### Easy to use

An external lifting eye for easy lifting, user-friendly controller, canopy that opens 60° for easy access to all internal components and quick service. The X-AIR 185-100 was designed to make your life easier.

### Long lasting quality

Depending on your application you might ask about robustness, durability, ruggedness or toughness – we have one simple word for all of the above – The HardHat®. Protect your equipment and your investment.

### Increase your uptime

Servicing can be completed in less than 1 hour, thanks to easy access to all components and several features like spin-on filters. With the cold weather option, the compressor service interval of the X-AIR 185-100 increases from 1000 hours to 1500 hours or 2 years. In between the service intervals, the X-AIR 185-100 gives full peace of mind as the 110% fluid containment undercarriage avoids any spills.



# Innovative features to boost your efficiency

### Easy to maneuver and operate in the most demanding environments

The external lifting eye allows you to easily lift the compressor, moving it to where you need it to be. In addition, the vertical exhaust allows to operate the compressor in various environments.



### Load Valve for easy starting

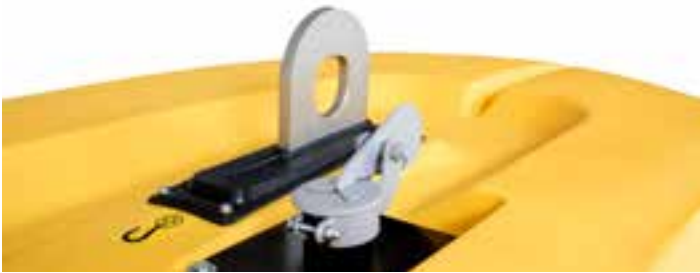
No longer do operators have to crack open an outlet valve to start the machine; just press start and let our smart controller take over

### No risk of oil spillages on site

Optional integrated toolbox can contain a 90lb hammer.

### Service in less than 1 hour

Thanks to spin-on filters, service can be completed quickly.



### Easy to use controller

With the Atlas Copco XC1004 controller, all the running parameters are clearly visible on one screen. This easy to use controller was designed in-house, just for compressors.





## The two-tool solution

Every construction company needs a “two-tool compressor package”, where one towable compressor can power two efficient breakers. The X-AIR 185-100 can be paired with 2 \* 90 lb hammers. In addition, the X-AIR 185-100 features an integrated toolbox that can safely store a 90 lb hammer when not in use.

## Total control to boost your efficiency

We believe a controller should put you in complete control, while being intuitive and most importantly easy to use and navigate. Easy to use means you don't waste any time controlling the compressor, while increasing your uptime.



### Easy to use

Atlas Copco designed the XC1004 controller specifically for small air compressors. It will be standard available on the X-AIR 185-100 compressor.

- **All key parameters** required to run a compressor efficiently are visible at first glance: pressure, fuel level and running hours.
- The controller is very easy to use, with an **intuitive navigation** using just 4 buttons.
- Next to the controller, an **emergency stop button** increases safety for any operator.
- In-house design by Atlas Copco.



### Made for mobile applications

We develop compressors for tough circumstances. Whatever temperature, altitude, humidity or dust level, you need compressed air in **extreme working environments**. Atlas Copco uses the same key principle when developing the XC1004 controller that is IP65 rated.



### Pro-active maintenance increases your uptime

The controller measures all key compressor processes. Any indication service is required or a failure might occur in the future, results in a clear warning on the main screen. As a result, you can pro-actively plan service, **minimizing your downtime**.



### Monitor your entire fleet

The fleetlink module allows to access all compressor data **from a distance**. In addition you can monitor the location of your compressor fleet.



# Increase your uptime

Service is a crucial part of the lifetime of a compressor. With service, you can guarantee the uptime of your compressor, while protecting your investment. On the other hand, service should take as little time as possible, so you maximize your uptime.



Atlas Copco ensures maximum uptime of your equipment. With the cold weather option, the compressor service interval of the X-AIR 185-100 increases from 1000 hours to 1500 hours or 2 years.



- Quick service
- Easy access to all components avoids the need to dismantle the unit
  - spin-on filters so service can be done without special tools



Through power connect app, quick access to view and order the relevant spare parts.

## TECHNICAL DATA

Performance		X-AIR 185-100
Working pressure	psi (g)	100
Max. free air delivery	cfm	189
Max. ambient temperature at sea level	°F (°C)	122 (50)
Min. starting temperature	°F (°C)	14 (-10)
Min. starting temperature with cold weather	°F (°C)	-13 (-25)
Engine		Kubota
Model		D1803-T
Number of cylinders		3
Output at rated speed (2700 rpm)	HP	49.6
Nominal speed	rpm	2700
Unload speed	rpm	1800
Capacity		
Engine oil	gal (l)	1.62 (6.1)
Compressor oil	gal (l)	2.5 (9.7)
Fuel tank capacity	gal (l)	27 (102)
Noise level		
Sound pressure level (LpA) at 7m	dB(A)	76
Dimensions and weight (undercarriage)		
Length	in	130"
Width	in	62"
Height	in	69"
Weight (trailer mounted)	lbs	2100

# Power Technique Solutions Portfolio

Atlas Copco's Power Technique Business Area has a forward-thinking philosophy. For us, creating customer value is all about anticipating and exceeding your future needs – while never compromising our environmental principles. Looking ahead and staying ahead is the only way we can ensure we are your long term partner.

## Air compressors

### Ready to go



- 110-250 cfm
- 58-125 psi

### Versatility



- 400-900 cfm
  - 58-200 psi
- \*Diesel and electric options available

### Productivity partner



- 950-1800 cfm
  - 100-508 psi
- \*1000-5000 psi with Boosters

## Handheld tools

### Pneumatic tools



- Breakers (5.5 – 90 lbs)
- Rockdrills (11 – 55 lbs)
- Underground Rockdrills
- Additional Air Tools

### Hydraulic tools



- Breakers (25 – 90 lbs)
- Additional Hydraulic Tools
- Powerpacks

### Gas engine driven tools



- Breakers & Tie Tampers (55 lbs)
- Combi Drills (50 lbs)

### Generators



- Portable
- Mobile
- Industrial

\*Multiple configurations available to produce power for any size application

### Light towers



- Electric LED

### Dewatering pumps



- Submersible
- Surface
- Small portable

\*Diesel and electric options available

Photos and illustrations contained herein might depict products with optional and/or extra components which are not included with the standard version of the product and, therefore, are not included in a purchase of such product unless the customer specifically purchases such optional/extra components. We reserve the right to change the specifications and design of products described in this literature without notice. Not all products are available in all markets.

**Atlas Copco**

**Atlas Copco Power Technique**  
[atlascope.com/ptba](http://atlascope.com/ptba)