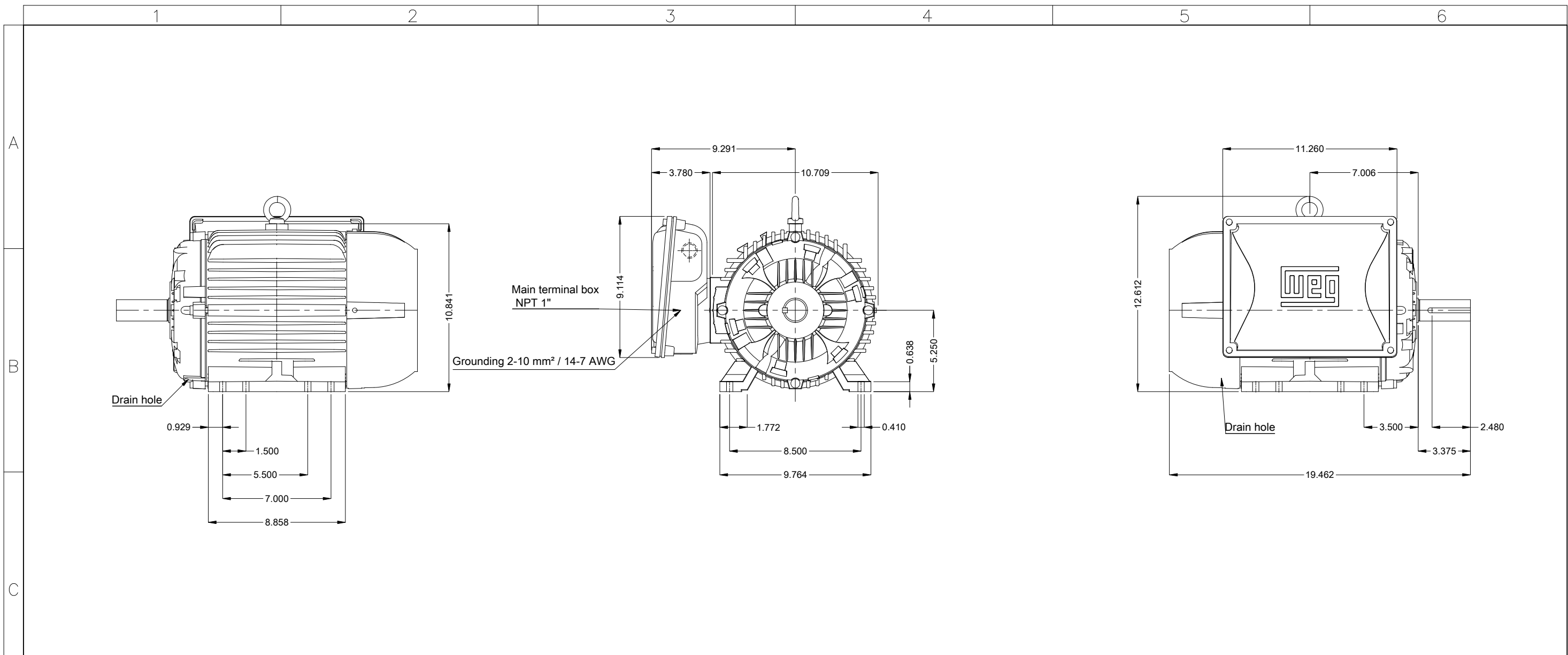


DATA SHEET

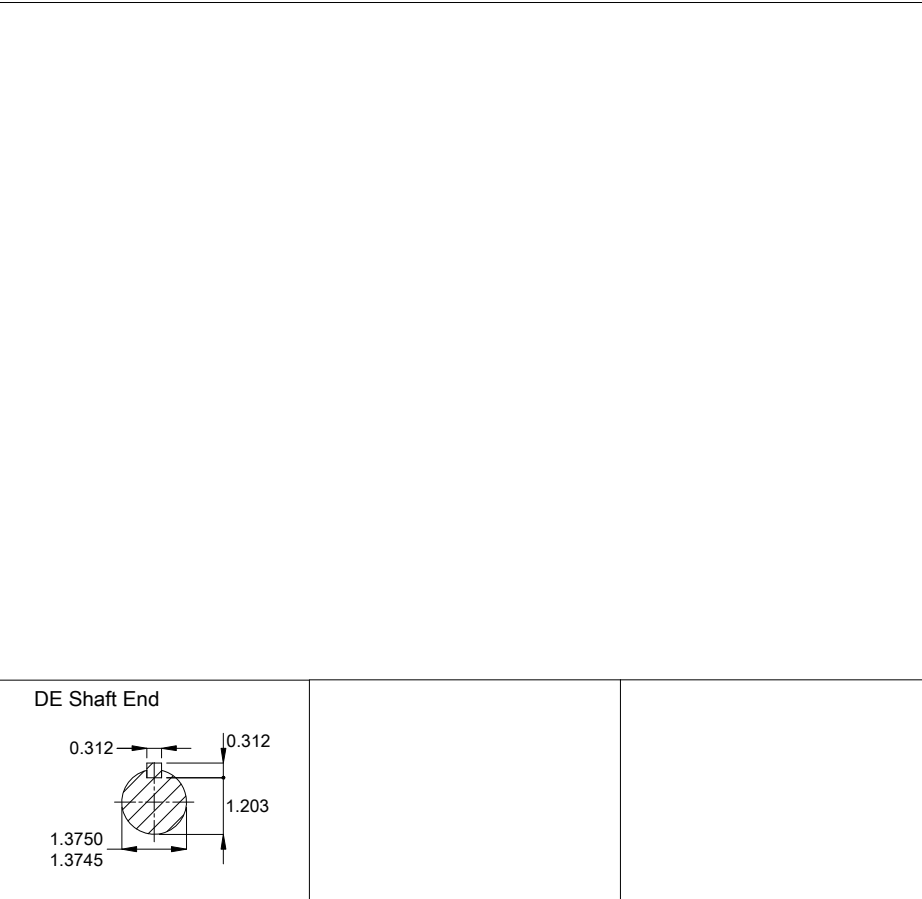


Single Phase Induction Motor - Squirrel Cage

Customer :						
Product line : W22 Single-Phase		Product code : 14154360				
		Catalog # : 01018ES1E215T-W22				
Frame	: 213/5T	Locked rotor time	: 10s (cold) 6s (hot)			
Output	: 10 HP (7.5 kW)	Temperature rise	: 80 K			
Frequency	: 60 Hz	Duty cycle	: Cont.(S1)			
Rated voltage	: 208-230/460 V	Ambient temperature	: -20°C to +40°C			
Poles	: 4	Altitude	: 1000 m.a.s.l.			
Rated current	: 44.5-40.8/20.4 A	Protection degree	: IP55			
	: 6.7x(Code G)	Cooling method	: IC411 - TEFC			
Rated speed	: 1740 rpm	Mounting	: F-1			
Rated torque	: 30.2 ft.lb	Rotation ¹	: Both (CW and CCW)			
Insulation class	: F	Noise level ²	: 63.0 dB(A)			
Service factor	: 1.15	Starting method	: Direct On Line			
Moment of inertia (J)	: 1.15 sq.ft.lb	Approx. weight ³	: 191 lb			
Output	50%	75%	100%	Foundation loads		
Efficiency (%)	77.9	82.5	84.0	Max. traction	: 313 lb	
Power Factor	0.92	0.94	0.95	Max. compression	: 504 lb	
		<u>Drive end</u>	<u>Non drive end</u>			
Bearing type	:	6308 ZZ	6206 ZZ			
Sealing	:	V'Ring	V'Ring			
Lubrication interval	:	-	-			
Lubricant amount	:	-	-			
Lubricant type	:		00088			
Notes						
This revision replaces and cancel the previous one, which must be eliminated. (1) Looking the motor from the shaft end. (2) Measured at 1m and with tolerance of +3dB(A). (3) Approximate weight subject to changes after manufacturing process. (4) At 100% of full load.			These are average values based on tests with sinusoidal power supply, subject to the tolerances stipulated in NEMA MG-1.			
Rev.	Changes Summary			Performed	Checked	Date
Performed by						
Checked by					Page	Revision
Date	04/05/2026				1 / 1	



Mounting NEMA F-1
 Mounting B3R(D)



10 HP 04 Poles 60 Hz										A	
Scale										2 : 13	
HYBRISUSER										00	
ECM	LOC	SUMMARY OF MODIFICATIONS					EXECUTED	CHECKED	RELEASED	DATE	VER
EXECUTED	HYBRISUSER	SINGLE PH. MOTOR W22 FRAME 213/5T IP55 TEFC					PREVIEW				
CHECKED							WDD		00		
RELEASED							SHEET		1 / 1		
REL. DATE											



Mod.ME1BFOX0X

MADE IN BRAZIL
14154360

MODEL 01018ES1E215T-W22

Electric Motor
Severe Duty

PH1 60Hz Fr. 213/5T 1000m.a.s.l. IP55 TEFC 191lb

V 230/460

A 40.8/20.4

HP 10

kW 7.5

SF 1.15

SFA 45.0/22.5

RPM 1740

PF 0.95

AMB 40°C

INS cl. F DT80K

NEMA NOM EFF 84.0%

DUTY CONT.

DES - Code G

USABLE @208V 44.5A SF 1.00

TO REVERSE ROTATION INVERT T5 AND T8



LOW VOLTAGE



HIGH VOLTAGE



POLYUREA BASED GREASE

