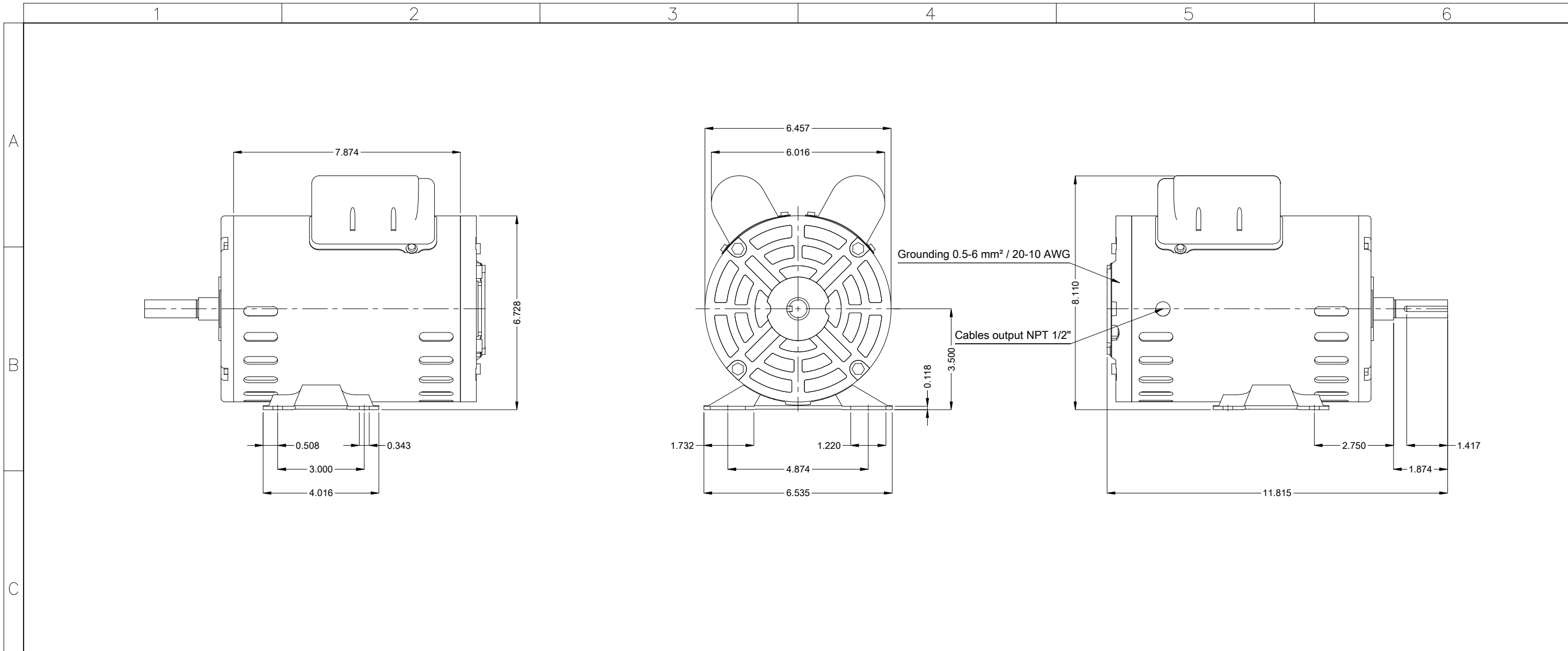


DATA SHEET

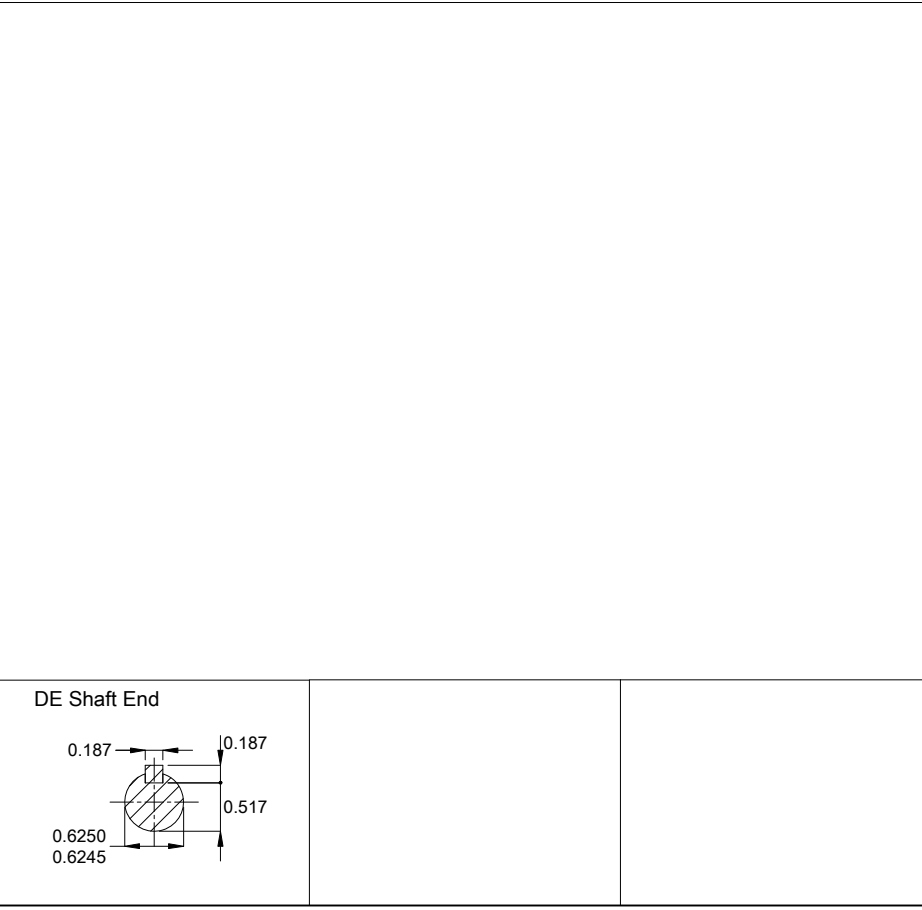


Single Phase Induction Motor - Squirrel Cage

Customer :						
Product line		: W01 Compressor Duty Single-Phase		Product code :	18676480	
				Catalog # :	00156OS1BCD56-S	
Frame	: 56		Locked rotor time	: 12s (cold) 7s (hot)		
Output	: 1.5 HP (1.1 kW)		Temperature rise	: 80 K		
Frequency	: 60 Hz		Duty cycle	: Cont.(S1)		
Rated voltage	: 115/208-230 V		Ambient temperature	: -20°C to +40°C		
Poles	: 2		Altitude	: 1000 m.a.s.l.		
Rated current	: 16.2/8.15-8.10 A		Protection degree	: IP21		
	: 6.2x(Code J)		Cooling method	: IC01 - ODP		
Rated speed	: 3480 rpm		Mounting	: F-1		
Rated torque	: 2.26 ft.lb		Rotation ¹	: Both (CW and CCW)		
Insulation class	: F		Noise level ²	: 70.0 dB(A)		
Service factor	: 1.00		Starting method	: Direct On Line		
Moment of inertia (J)	: 0.0330 sq.ft.lb		Approx. weight ³	: 0.0 lb		
Output	25%	50%	75%	100%	Foundation loads	
Efficiency (%)	52.6	57.0	65.4	72.0	Max. traction : 0 lb	
Power Factor	0.36	0.63	0.74	0.82	Max. compression : 0 lb	
Bearing type	:	<u>Drive end</u> 6204 ZZ		<u>Non drive end</u> 6202 ZZ		
Sealing	:	Without Bearing Seal		Without Bearing Seal		
Lubrication interval	:	-		-		
Lubricant amount	:	-		-		
Lubricant type	:	Mobil Polyrex EM				
Notes						
This revision replaces and cancel the previous one, which must be eliminated. (1) Looking the motor from the shaft end. (2) Measured at 1m and with tolerance of +3dB(A). (3) Approximate weight subject to changes after manufacturing process. (4) At 100% of full load.			These are average values based on tests with sinusoidal power supply, subject to the tolerances stipulated in NEMA MG-1.			
Rev.	Changes Summary			Performed	Checked	Date
Performed by						
Checked by					Page	Revision
Date	01/05/2026				1 / 1	



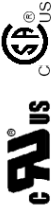
Reinforce the foot with 2 mig welding spots
 Mounting MARKET F-1/B3R(D)
 Mounting B3R(D)



1.5 HP 02 Poles 60 Hz										A	
Scale 2 : 7											
HYBRISUSER										00	
ECM	LOC	SUMMARY OF MODIFICATIONS					EXECUTED	CHECKED	RELEASED	DATE	VER
EXECUTED	HYBRISUSER	SINGLE PH. MOTOR W01 COMPRESSOR DUTY					PREVIEW		WDD 00		
CHECKED		FRAME 56 IP21 ODP					SHEET 1 / 1				
RELEASED											
REL. DATE											



W01 1ZMO3ZC0X0X

**W01**

MADE IN MEXICO

18676480

24MAR2026

B/N: 3985780

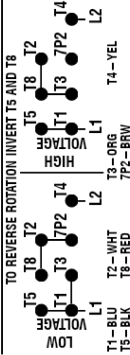
kW(HP) 1.10(1.50)

MODEL 00156OS1BCD56-S

PH1 60Hz Fr.56 1000m.a.s.l. ODP 25lb DUTY CONT.

AMB 40°C INS cl. F DT80K Code J DES -

V	Hz	RPM	A	SFA	SF	PF	IE code	NEMA NOM EFF
115	230	60	3480	16.2	8.10	-	-	72.0
-	-	-	-	-	-	1.00	0.82	-
-	-	-	-	-	-	-	-	-
-	-	-	-	-	-	-	-	-
-	-	-	-	-	-	-	-	-
-	-	-	-	-	-	-	-	-

COMPRESSOR DUTY**THERMALLY PROTECTED****Electric Motor****MOBIL POLYREX EM**

-6202-ZZ



WARNING: Motor must be grounded in accordance with local and national electrical codes to prevent serious electrical shocks. Disconnect power source before servicing unit.

AVERTISSEMENT: Le moteur doit être mis à la terre conformément aux codes électriques locaux et nationaux afin d'éviter tout choc électrique grave. Déconnectez l'alimentation avant l'entretien de la machine.

